



SMS Miniature Pneumatic Switch fitted to 2001W type Pressure Switch

The miniature pneumatic switch (SMS) used on SIRCO™ Controls, is a three way control valve which is ideally suited for the operation of cylinders having up to 1½" bore diameters, and for actuating pilot valves controlling diaphragm valves or large bore cylinders.

They can be fitted to the Series 2000 switches with Non-Adjustable Differentials only.

These valves operate at an air pressure of 1.4 to 10.5 Barg and have a flow capacity of 10 c.f.m. at 7 Barg. They may be used as normally open or normally closed valves.

They consist of a zinc die cast body, plastic valve spool and floating nitrile 'O' rings, and can be fitted to any range of control with a fixed differential only.

The operating force on normally closed with a valve line pressure of 1.4 Bar is 22 ounces, with a valve line pressure of 5 Bar it goes up to 28 ounces.

For normally open the operating force is 2½ lbs and 6 lbs respectively.

They employ a bleed type actuator.

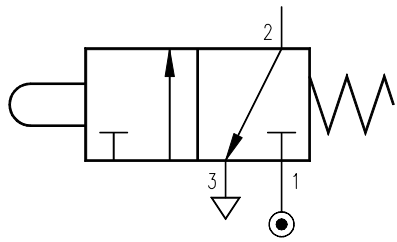


Fig. A

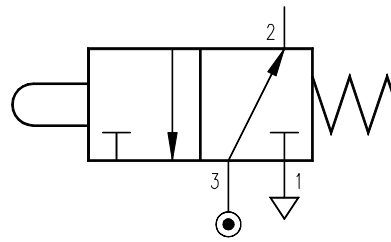
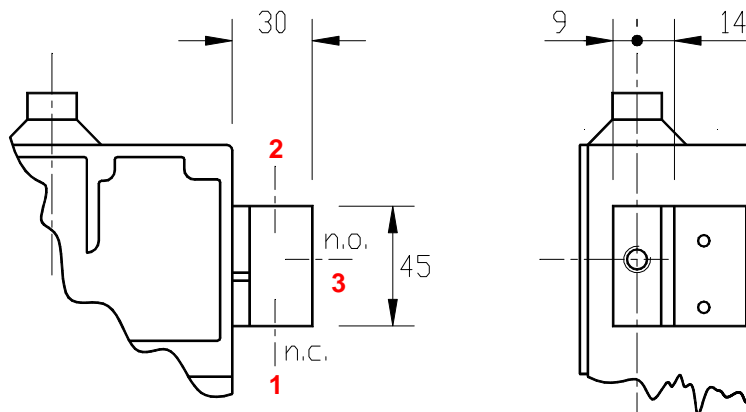


Fig. B

CONNECTION DETAILS:

For normally closed valve (**Fig. A**): See Fig. A inlet port **1** is closed and port **2** can exhaust through port **3**.
When spool is actuated port 1 is now open to port 2 and port 3 is closed.

For normally open valve (**Fig. B**): Port **3** becomes the inlet port and port **1** now becomes the exhaust port.



Pneumatic valve connections: 1/8" NPT Female
n.c. Normally closed
n.o. Normally open